



## Online Meeting

June 21, 2022

What is Richmond Connects?  
Why should I care?  
How can I get involved?

Welcome! The meeting will begin shortly.

# Welcome!

Richmond Connects is the process to develop the City of Richmond's transportation plan -

**a plan to make the transportation system work for everyone.**





# Today's Meeting



## 1 Presentation

What is Richmond Connects?  
What is equity in transportation?  
How will we achieve equity in transportation?  
What's the timeline?  
Why should I care?  
How can I help?



## 2 Questions and Answers

Ask the team!



# To ask a question or give a comment:

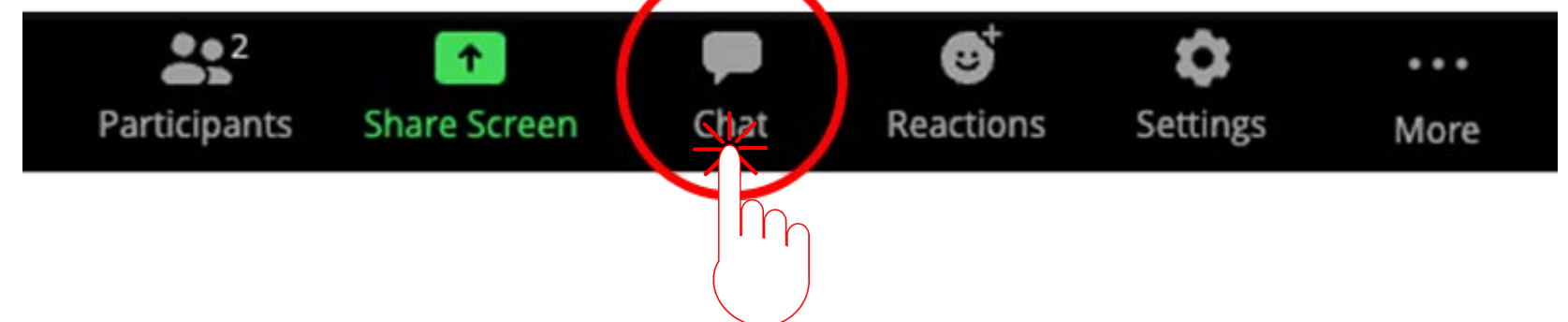
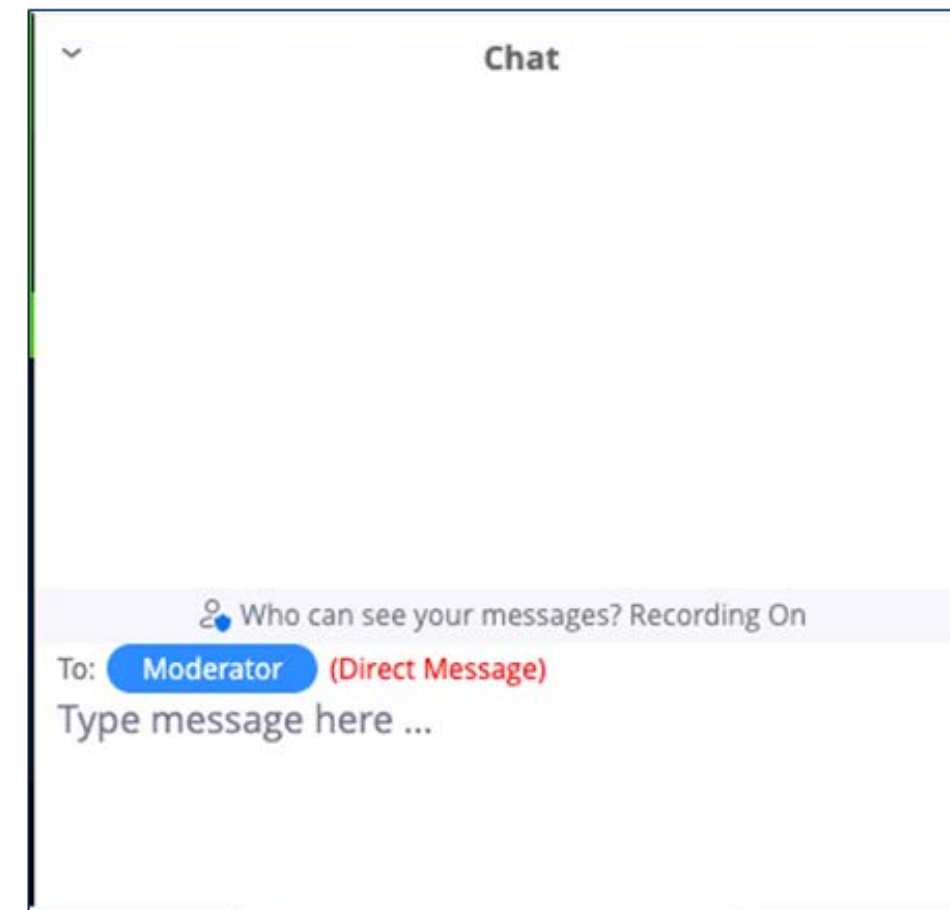
## Option 1:

Click on Chat.

Type your question.

Hit Enter.

The moderator will read your question after the presentation.





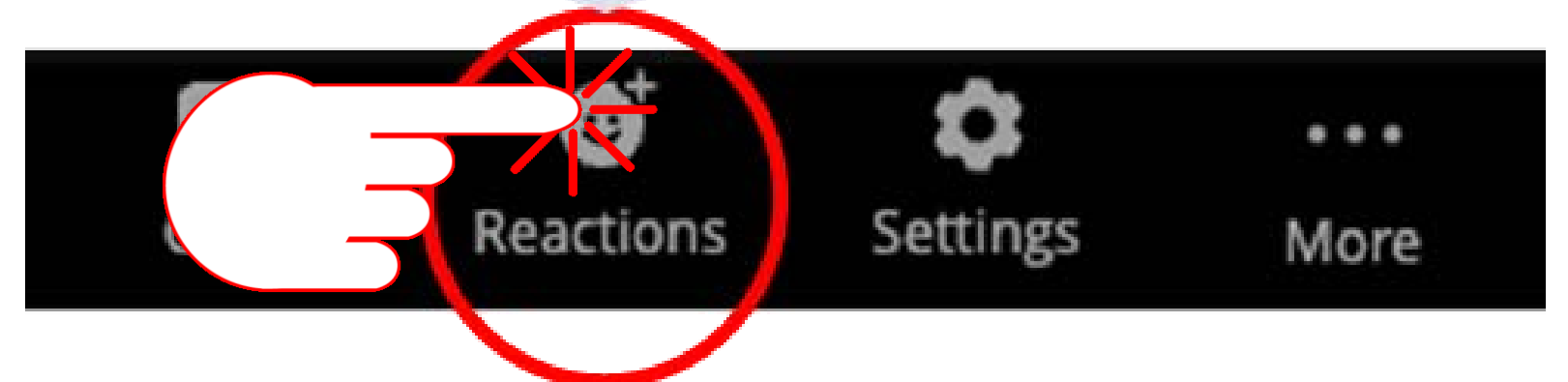
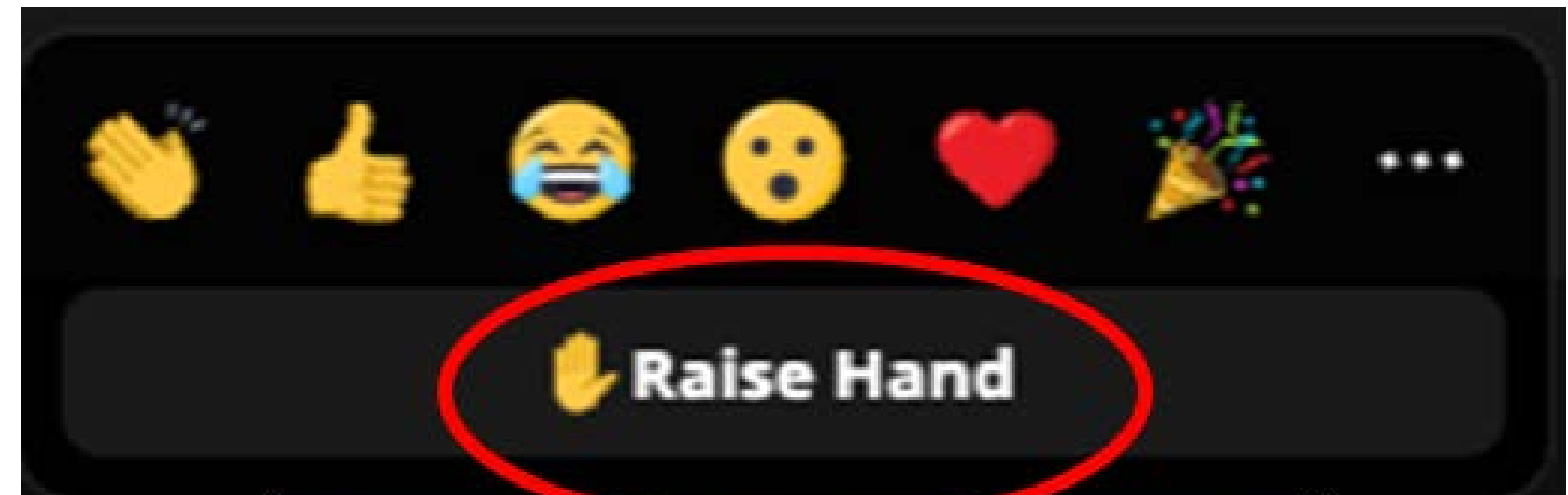
# To ask a question or give a comment:

## Option 2:

Click on "Reactions"

Click "Raise Hand"

After the presentation, the moderator will call on you. At that time, please unmute and give your comment or ask your question verbally.



# To ask a question or give a comment:

## Option 3:

If you are connected by phone:  
Dial \*9 to raise your hand.

After the presentation, the moderator will call on you.

At that time, dial \*6 to unmute yourself.

Give your comment or ask your question verbally.





# Today's Speakers



**Kelli Nash Rowan (she/her)**  
**City of Richmond, Office of Equitable  
Transit and Mobility  
Program Management Consultant**



**Jessica Dimmick (she/her)**  
**EPR, P.C.**  
**Richmond Connects Consultant Team  
Project Manager**



**Chenice Brown (she/her)**  
**City of Richmond, Office of Equitable  
Transit and Mobility  
Community Outreach Specialist**





# What is RICHMOND CONNECTS ?



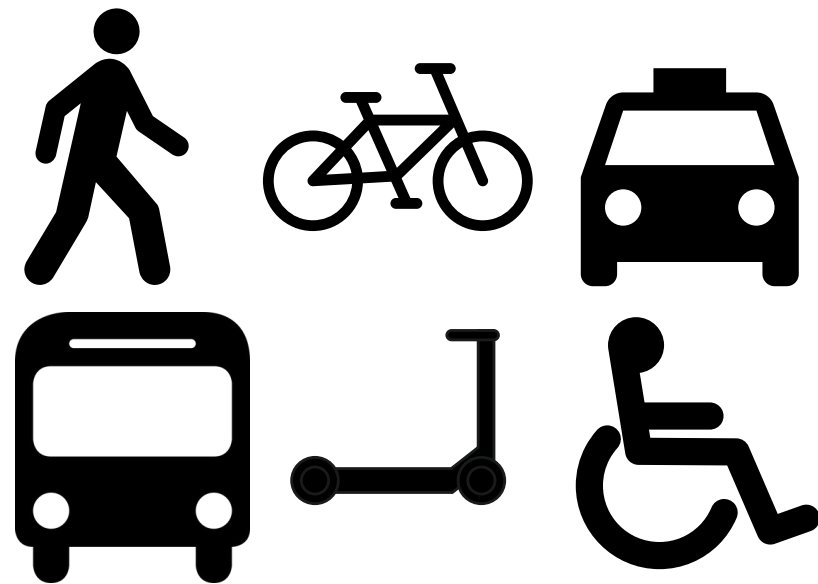


# is the City's Strategic Multimodal Transportation Plan





# What is RICHMOND CONNECTS ?



## It's multimodal

It's about making it safer, easier, and faster to get around without owning your own car - by walking, riding a bike, or taking the bus.



## It's centered on equity

It's about healing past injustices and removing barriers so everyone has access to opportunities.



## It's a plan to guide future decisions.

It will identify a list of projects the City will seek funding for and other recommendations to guide how the City makes decisions on transportation issues.



# What is RICHMOND CONNECTS ?

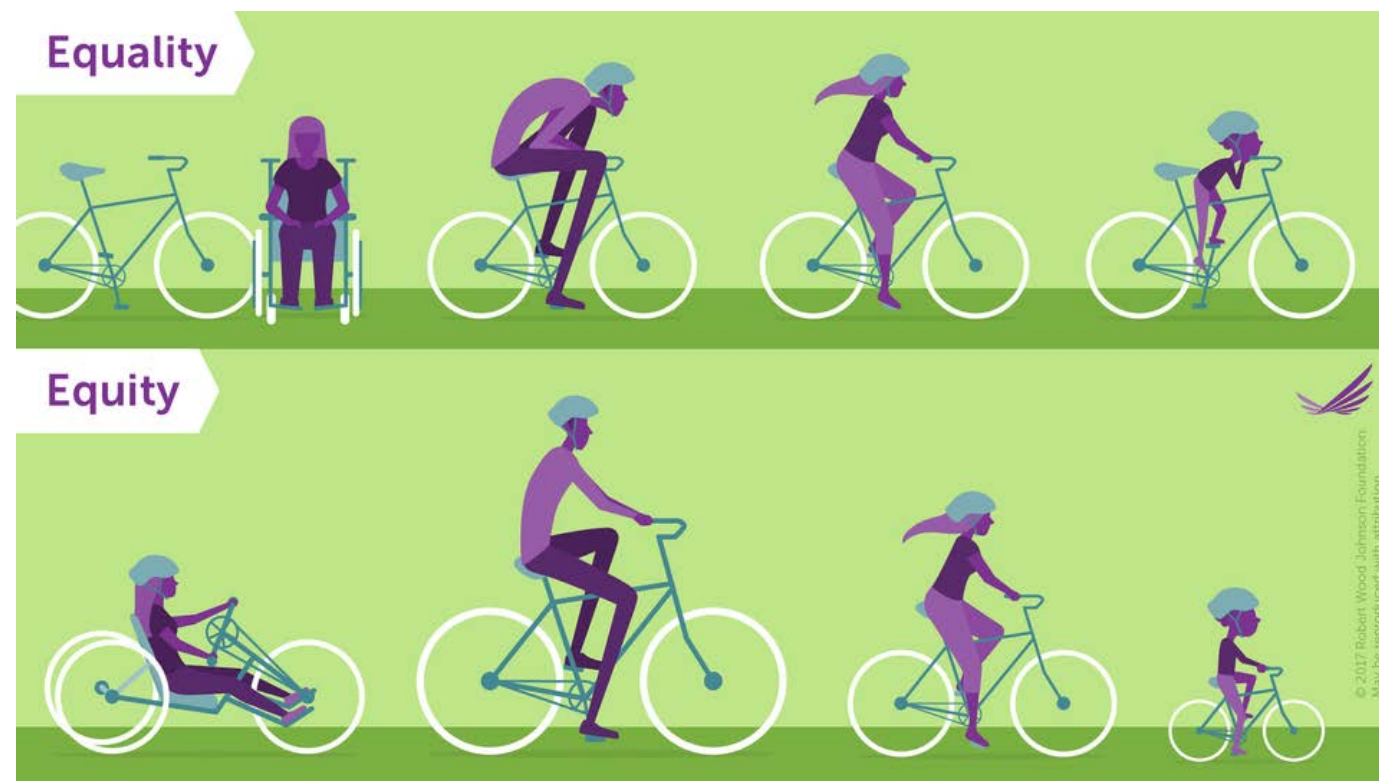
It will create a **list of projects** and other recommendations that the City will seek funding for to make it easier and safer to get around without a car.



# What is RICHMOND CONNECTS ?

Richmond Connects is different from other transportation master plans.

It's **focused on equity** and will work towards **healing past injustices.**







**What is equity in  
transportation?**





# Equity is:

Empowering people and communities that have experienced past injustices by removing barriers to access and opportunity.

from The City of Richmond's Equity Agenda,  
adopted June 14, 2021

**“ Richmond prioritizes the movement of people over the movement of vehicles through a safe, reliable, equitable, and sustainable transportation network. ”**

Vision for Equitable Transportation from  
Richmond 300

# Equity Factors

What does it mean for Richmond's transportation system to be equitable?

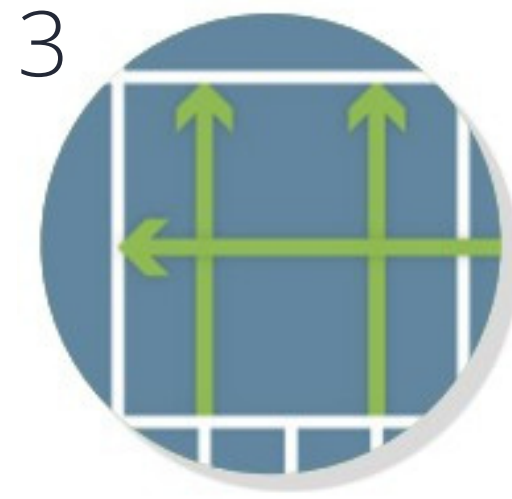
## Transportation investments will:



Improve access to housing, jobs, services, recreation, and education, addressing remaining inequities created by redlining.



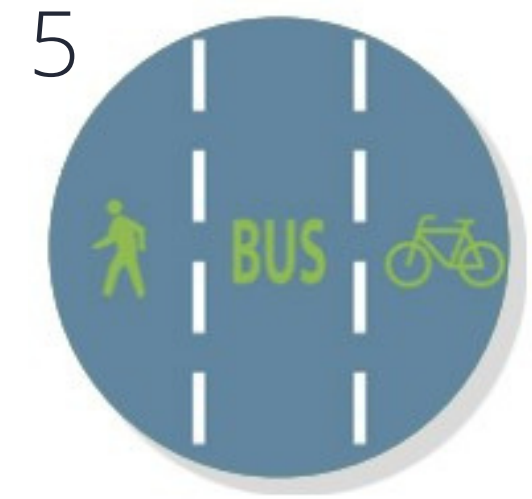
Reconnect and revitalize communities to address inequities created by the highway system's dissection of neighborhoods.



Improve neighborhood connectivity and revitalize the fabric of the communities negatively impacted by urban renewal.



Improve access to housing, jobs, services, and education to address the isolation of low-income inner ring suburbs where families are pushed.



Address gaps in the multimodal network and utilize new planning tools to improve safety and accessibility deficiencies stemming from traditional car-centric planning.

These 10 Equity Factors were established through an Advisory Committee representing diverse community perspectives and interests as part of the Path to Equity policy guide for Richmond Connects. *Read more about the Path to Equity at <https://www.rva.gov/connects>.*



# Equity Factors

What does it mean for Richmond's transportation system to be equitable?

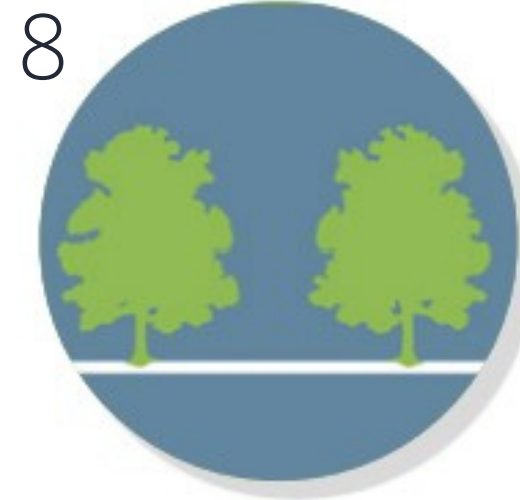
## Transportation investments will:



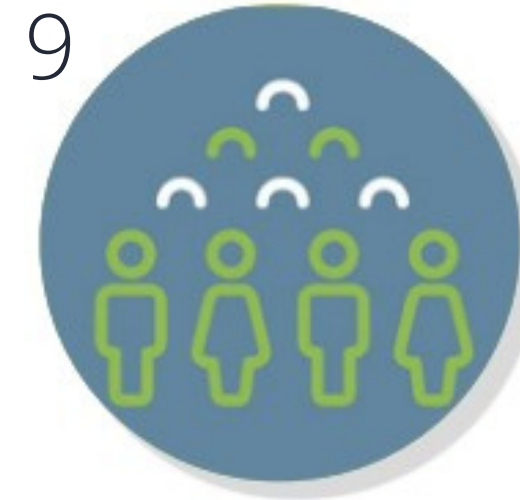
Equitably increase the safety and comfort of cyclists and pedestrians, connecting communities of concern to opportunities.



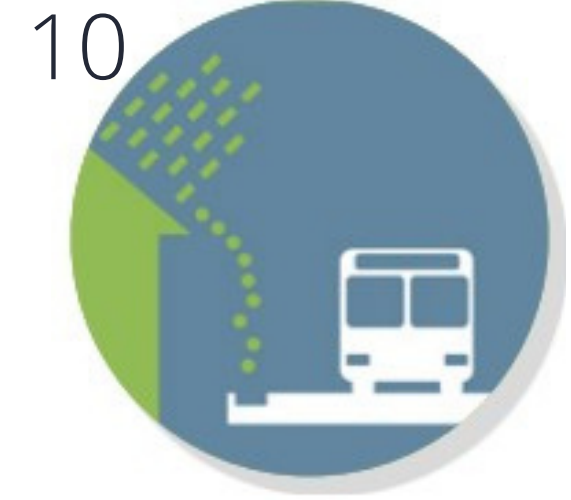
Improve reliability of transit and other non-car services to increase access and remove barriers to opportunities for communities of concern.



Prioritize the needs of socially vulnerable users and address climate and environmental equity as identified in RVA Green 2050.



Prioritize densely populated areas of communities of concern including communities of color, low-income communities, senior and limited mobility populations, families traveling with children, and at-risk youth.



Focus on improving climate resiliency for the most impacted communities.

These 10 Equity Factors were established through an Advisory Committee representing diverse community perspectives and interests as part of the Path to Equity policy guide for Richmond Connects. Read more about the Path to Equity at <https://www.rva.gov/connects>.

# If transportation was equitable in Richmond, what would be different?



Open your phones and scan the QR code or go to: <https://www.menti.com/h6jf8z3dba>

To take the poll:

Code: 6103 0269



Go to [www.menti.com](http://www.menti.com) and use the code ✨

Mentimeter

If transportation was equitable in Richmond, what would be different?



Pause scroll





# How will we achieve equity in transportation?

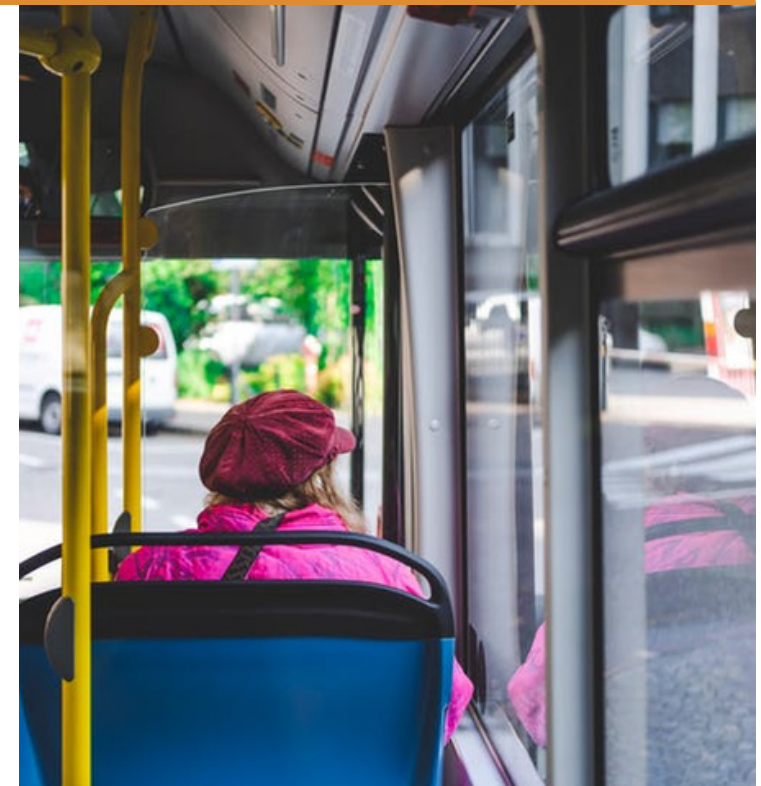
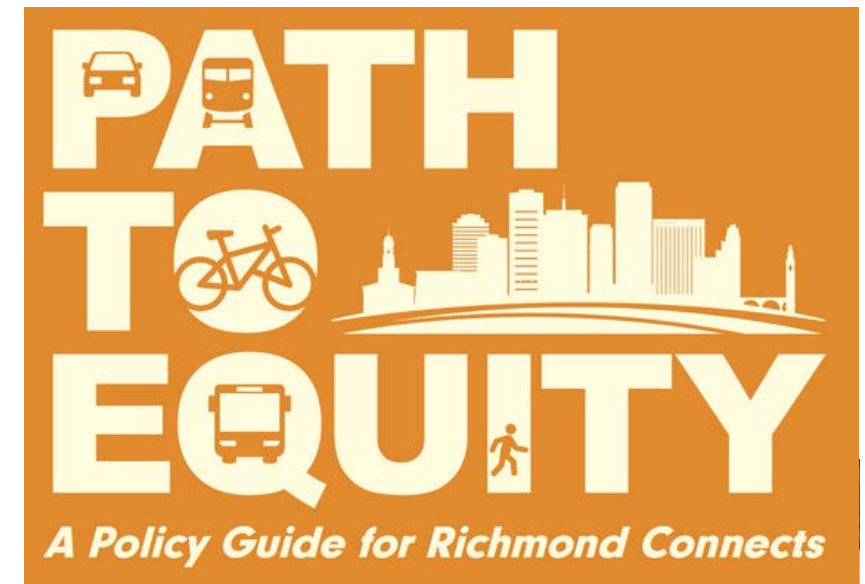




# How do we achieve equity in transportation?

## GUIDING PRINCIPLES

- Listen more than you talk
- Walk the walk, not just talk the talk
- Put your money where your mouth is

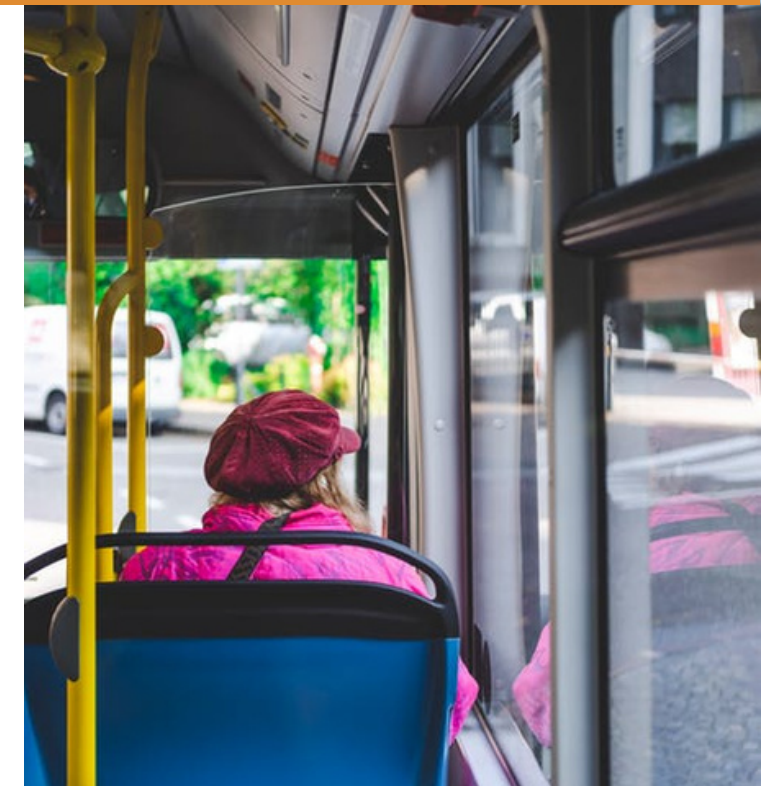
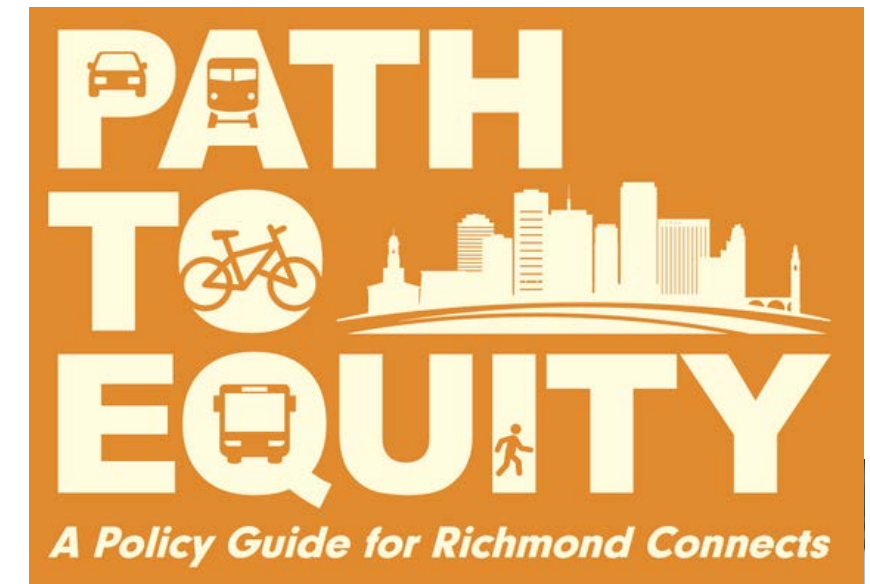




# How do we achieve equity in transportation?

## EQUITABLE OUTREACH

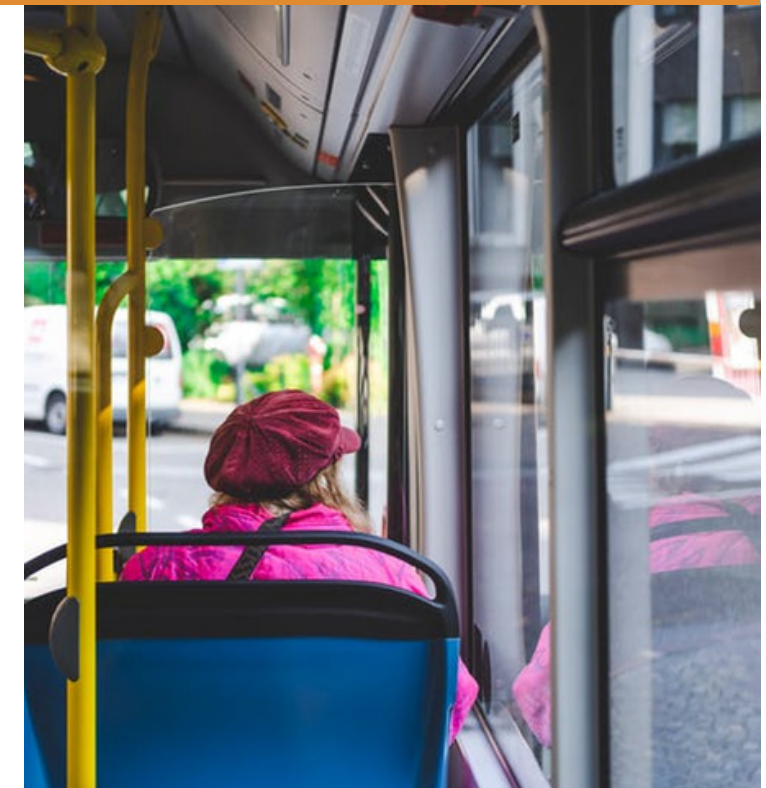
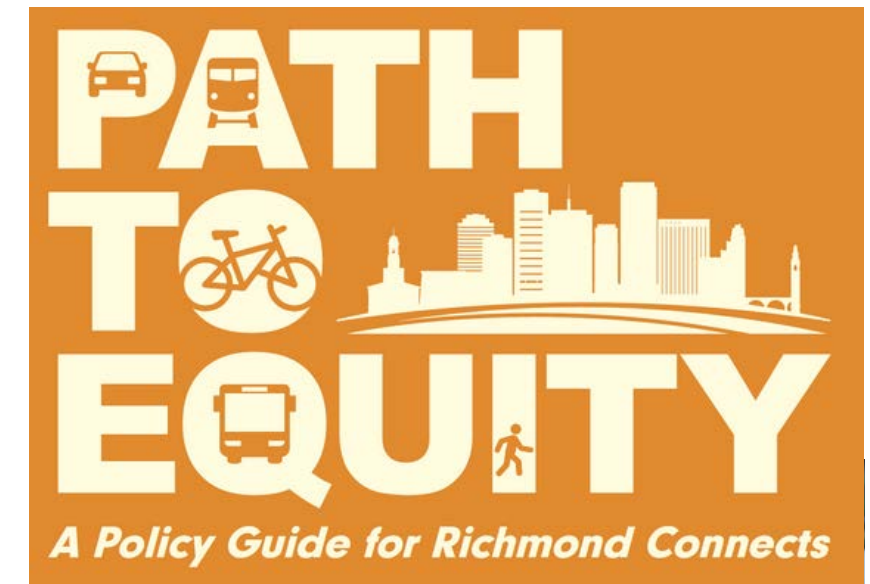
- Focus on elevating voices of people who have been harmed by past injustices
  - Community pop-ups
  - Focus groups
  - Compensated community ambassadors
  - Focus on specific demographic groups and specific neighborhoods



# How do we achieve equity in transportation?

## COMMUNITY DECISION-MAKING

- Put decision-making authority into participants' hands so they mold the outcomes of the process.





# How are we going to do this?

A combination of:  
**data-driven analysis** and  
**public input** to identify  
**needs**

■ what needs to be improved and where?



# What are needs?

## Transportation System needs:

Gaps or problems in the transportation system



## Equity Focus Areas:

People and communities that have been harmed by past injustices





# What's next

## Identify top needs:

What's most important?

Fall 2022

## Develop solutions:

What can we do to address the needs?

Winter 2023

## Looking longer term:

- What could 2050 look like?
- What future do we want for Richmond?
- How do we get there?

Spring/Summer 2023





**What's the timeline?**

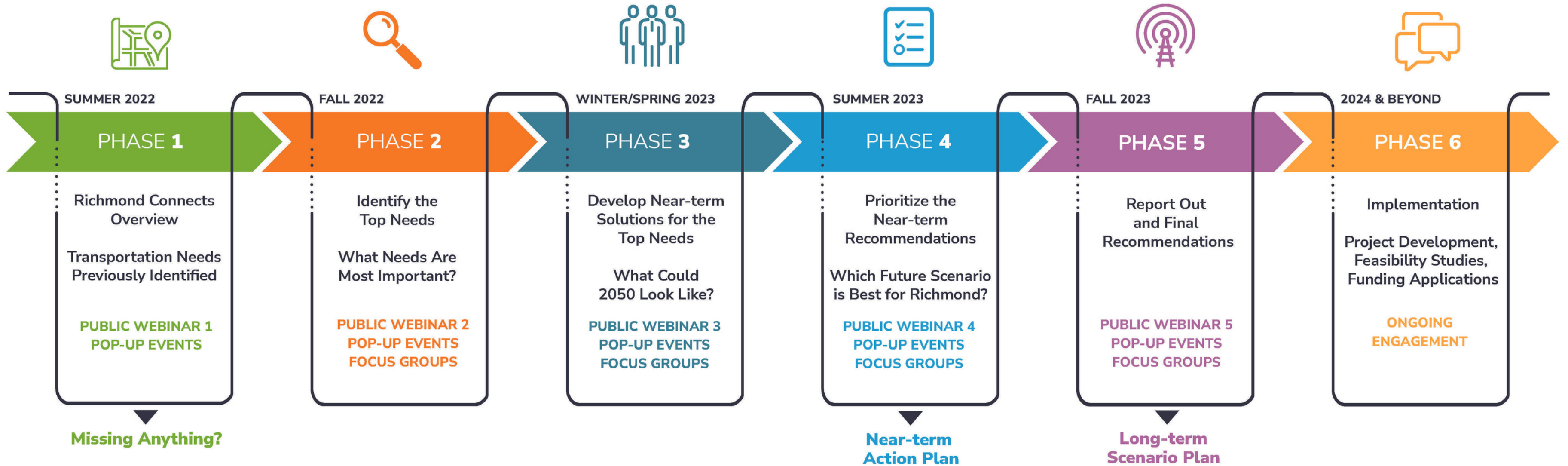




# RICHMOND CONNECTS

## COMMUNITY ENGAGEMENT TIMELINE

Powered by Path to Equity: Policy Guide



Community-based insights guided by the Richmond Connects Advisory Committee, Steering Committee and Technical Subcommittee.



# Why should I care?





Every year, 14 people are killed in traffic-related incidents on Richmond's streets.

5 of these deaths are people walking or bicycling.

These deaths fall disproportionately on people of color, youth, elderly, and those with low incomes.

Pedestrian fatalities are rising across the nation, including here in Virginia.





# When transportation works for everyone:

- Workers can get to jobs
- Kids can get to school
- You don't need to own a car to get where you need to go
- You can access healthy food
- Everyone can access opportunities for education, employment, healthcare
- People have opportunities to exercise and recreate in daily life

**Everyone thrives!**







**How can I help?**



# **Tell Us: What needs to be improved to make transportation in Richmond safe and easy for everyone!**

Have 5  
minutes?

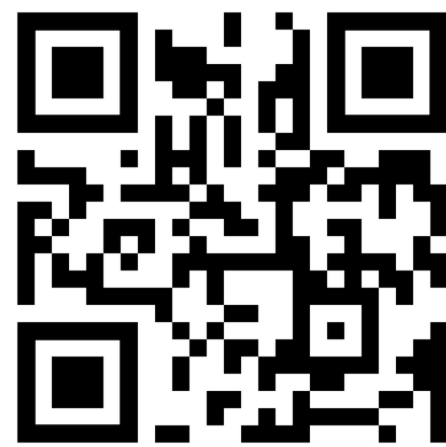
Take the quick  
survey



<https://arcg.is/1iSDSW0>

Have 20  
minutes?

Explore the  
online map



<https://arcg.is/OXTTG>

Told us  
already?

Explore the  
dashboard



<https://bit.ly/3xgLQS1>





# Next Steps

Share the survey and website with your friends and family!

Join the email list to get updates.

Want to be part of the team to talk more about these issues or help get the word out and be paid for your time?

**Email [Connects@rva.gov](mailto:Connects@rva.gov)**

**or call 804-646-3513**







# Questions?

Type your question in the chat, or Raise your Hand.

Ready to take the survey?

Go to [RVConnects.com](https://RVConnects.com) and tell us what needs to be improved in your neighborhood!